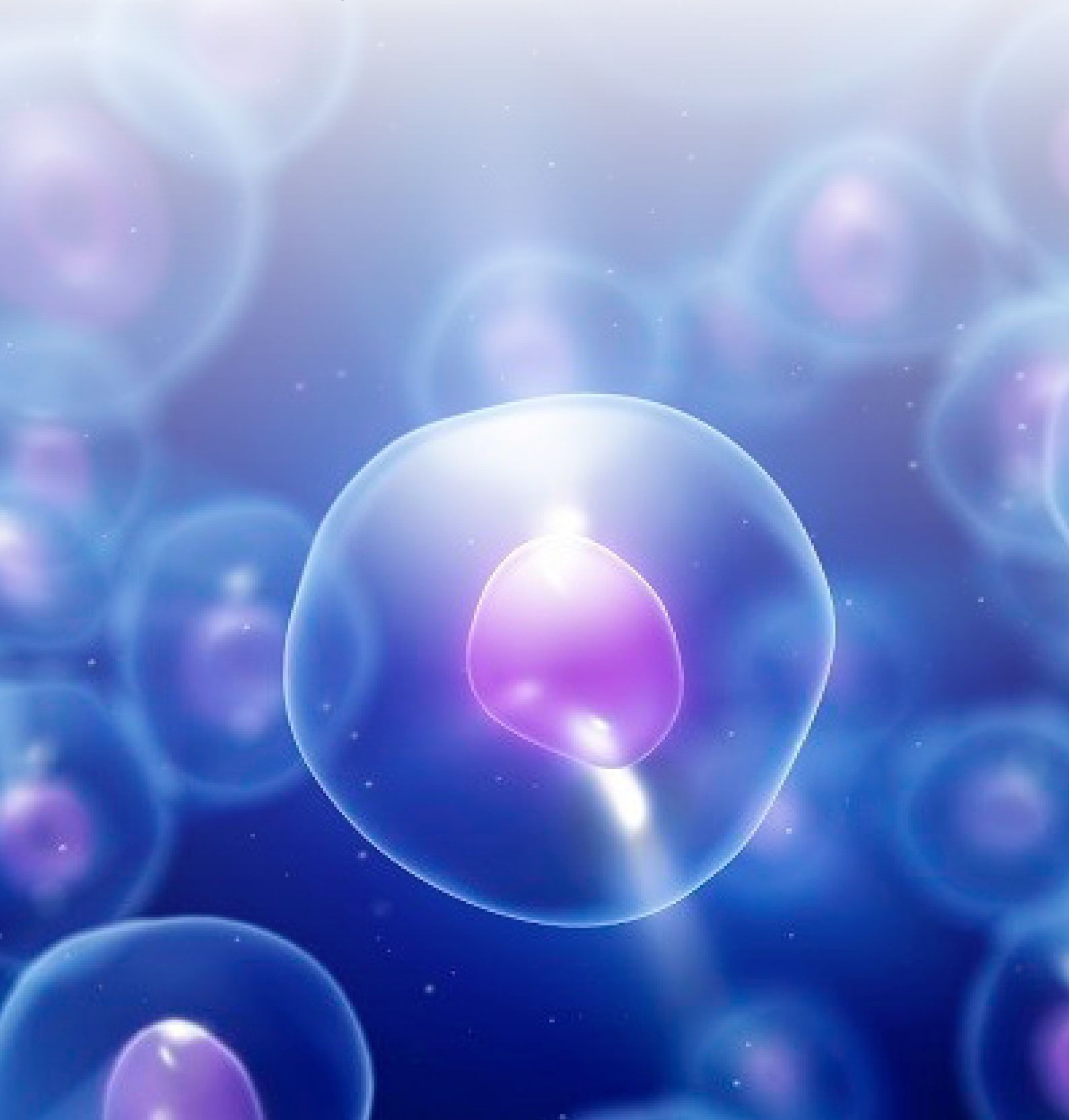


CPD accredited

2<sup>nd</sup> International Conference on

# **Tissue Science and Regenerative Medicine**

June 06-07, 2019 | London, UK



Day 1: June 06, 2019 (Thursday)	
08:30-08:45 Registration Desk opens	
08:45-09:00 Opening Ceremony & Inaugural Address	
KN	<b>Alexander Seifalian</b> Graphene, butterfly and stem cells is set to revolutionise medical devices
KN	<b>Shokria Ehsani</b> Proliferation of Human Endometrial Stem Cells Are Experimented By C0-culture of Mouse Fallopian Stem Cells
PL	<b>Ammar Ali Almarzooq</b> Improving pharmacovigilance in Jordan: Drug metabolism enzymes allele in relation to risks and therapy in populations
PL	<b>Antonello Petrella</b> Mesoglycan induces keratinocyte differentiation through syndecan-4 and annexin A1/S100A11 complex: a new drug-induced side road to stimulate re-epithelialization
PL	<b>Mahesh Shivaji Chavan</b> Differentiation of human dental pulp stem cells (hDPSCs) into epithelial and neural lineages with traditional Indian medicine
11:00-11:30 Networking & Refreshments Break	
KN	<b>Debora Nino-Laffont</b> Total tissue regeneration in Necrosed strategyNecrosed Diabetic Foot with new biomedical strategy
KN	<b>Mohamed Abd Ellatif</b> The Combination of Photodynamic Therapy with Anti-Angiogenic Therapy for the Effective Control of Local Prostatic Tumor and Distant Metastasis
PL	<b>Caroline Hoemann</b> Articular cartilage engineering with innate immune-modulating biomaterial implants deposited in the subchondral bone marrow
PL	<b>Danny Baranes</b> Coralline biomaterials for repair of brain damage
13:30-14:00 Networking Lunch	
KN	<b>Rui Seabra Ferreira Jr</b> Prospecting, Development, Optimization and Clinical Trial of New Heterologous Fibrin Sealant Derived From Snake Venom: From Bench to the Bedside
PL	<b>Madhu Dhar</b> Translation of Basic Research into Cell-Based Therapies in Tissue Regeneration
PL	<b>Enrique Brandan</b> CTGF/CCN2 a profibrotic factor to target in neuromuscular diseases
PL	<b>Raniah Al Eid</b> Molecular Biology Applications in Oral and Maxillofacial Surgery
PL	<b>Ken Yaegaki</b> Liver Tissues Regenerated from Human Tooth Treats Liver Failure of Rat Cirrhosis Model and Swine NASH Model
Day 2: June 07, 2019 (Friday)	
08:30-08:45 Registration Desk opens	
08:45-09:00 Opening Ceremony & Inaugural Address	
KN	<b>Burra Gunasekhar</b> Therapeutic strategies for inhibition of polyglutamine aggregation associated with Huntington's disease
PL	<b>Christian Agyare</b> Dentification of mushrooms using internal transcribed spacer regions
PL	<b>Pietro Gentile</b> The combined use of fat graft enriched with Stromal Vascular Fraction Cells and Platelet-Rich Plasma in the treatment of breast soft tissue defect

## 11:00-11:30 Networking &amp; Refreshments Break

KN	<b>Hua Shao</b> Adipose Derived Mesenchymal Stem Cells Attenuates Pulmonary Fibrosis of Silicosis via Anti-apoptosis Effects in Rats
PL	<b>Jens Ducreé</b> From tissues to cells and back: Microfluidics-enabled solutions for parallel and time-resolved multi-parameter characterisation of individual cells across a population
PL	<b>Prakash Kodali</b> Whole slide imaging scanner for tissue/cytology slides with virtual control and cloud functionalities of sharing and detection using deep learning for CADx (Computer Aided Detection)
PL	<b>Husain Bneed Awad</b> The Skin Disease Mutation Cx31L209F Induces a Calcium- and Cobalt-Sensitive Leak Current across the Cell Membrane

## 13:00-14:00 Networking Lunch

YRF	<b>Noura Alzahofi</b> Spire: A new Rab27a-effector Characterizing Rab27a interaction-sites within spire
YRF	<b>Jedrzej J Jaworski</b> Investigation into the mechanism regulating mitotic DNA synthesis (MiDAS)
YRF	<b>Samira Safarikia</b> Generation of 3D Organoids of Human Fetal Biliary Tree Stem Cells (HbtsCs) as Innovative Tool for the Regenerative Medicine of Liver and Pancreas
YRF	<b>Ang Zi Ning</b> Characterising the effect of spautin-1 on nutrient signalling and cellular metabolism

\*Speaker Slots Available

Poster Presentation

Awards / Closing Ceremony



# Tissue Science 2019

London, UK